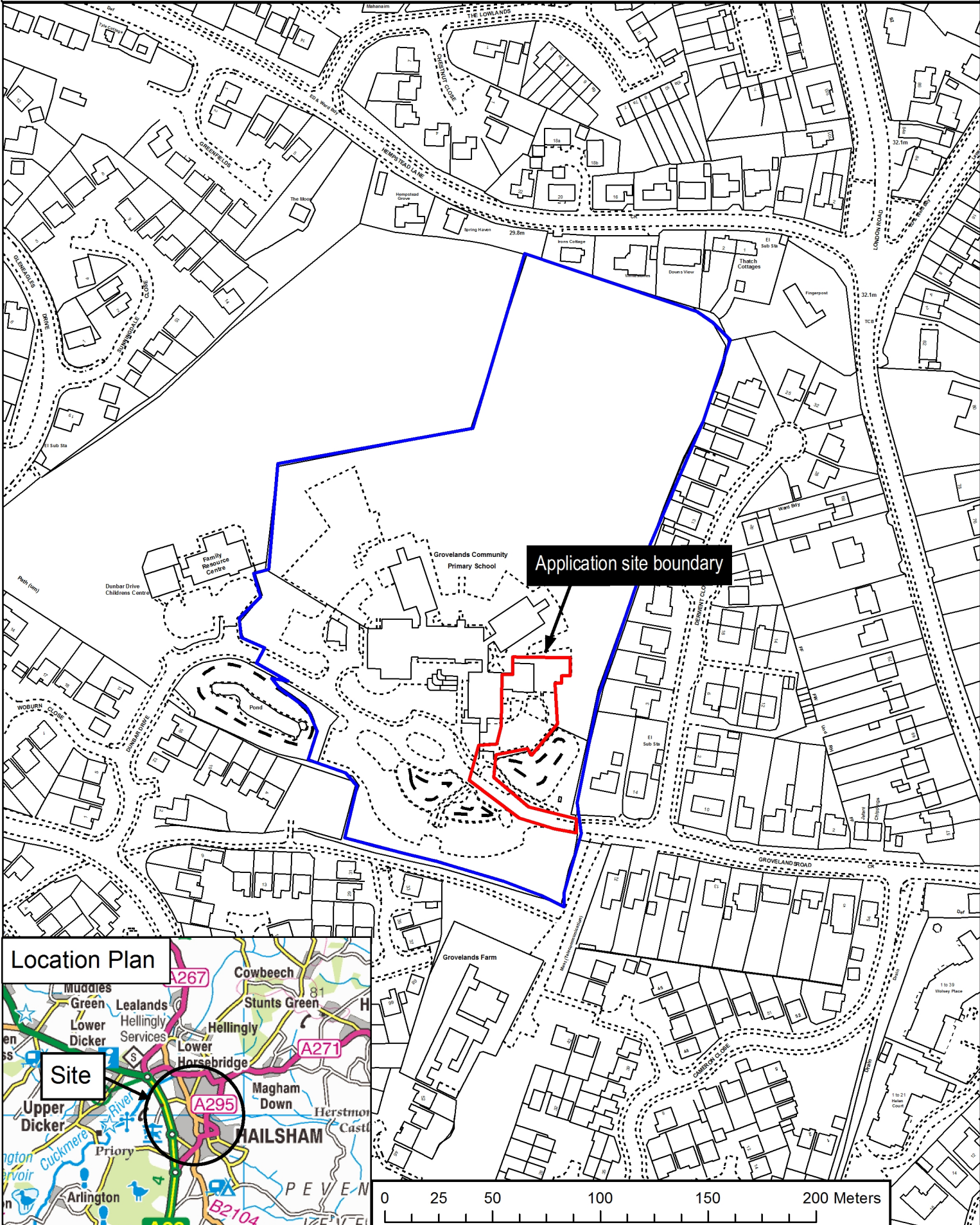


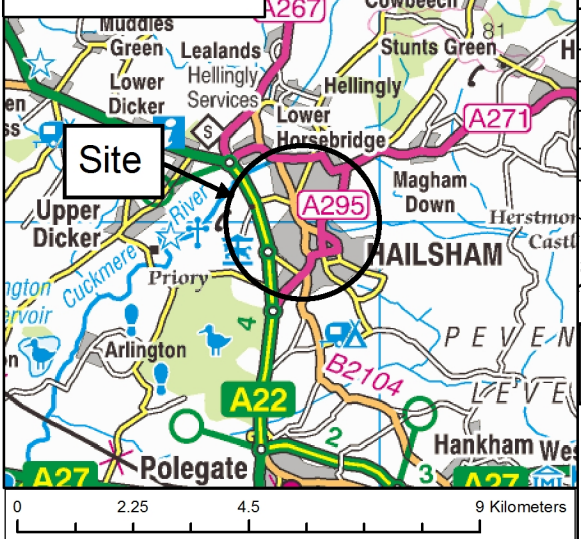
# WD/3376/CC

## Grovelands CP School, Dunbar Drive, Hailsham



**Application site boundary**

### Location Plan



Rupert Clubb BEng (Hons) CEng  
MICE, Director of Communities,  
Economy and Transport, East Sussex  
County Council

Reproduced from the Ordnance Survey mapping with the permission of the Controller of Her Majesty's Stationery Office © Crown Copyright. Unauthorised reproduction infringes Crown copyright and may lead to prosecution or civil proceedings. East Sussex County Council, 100019601, 2017